

# Living Wales Programme Ecosystem Understanding and Future Management Project

**Developing and Embedding the Ecosystem  
Approach for the Natural Resources Body**

**Kathryn A. Monk  
Environment Agency Wales**



# The Challenge

The central proposal in the Jan 2012 Green Paper on a new approach to natural resource management in Wales: **Sustaining a Living Wales**” is to move to an ecosystem approach to environmental regulation and management. This will mean considering and regulating the environment and its health as a whole rather than dealing with individual aspects separately.

Overall we expect the new approach will:

- improve the resilience and diversity of our environment and its supporting biodiversity;
- provide simpler and more cost-effective regulation;
- offer greater certainty for decision-makers.

**The new (Natural Resources) body will have sustainable development as its central organising principle, using the ecosystem approach to inform how it undertakes its work and drawing on science and evidence informed by operational practice.**

The public consultation on this closes 5 Oct 2012. The new body comes into being on 1 April 2012.



# Our Starting Point

## Overview of Ecosystem Approaches and Thinking

### International



Convention on  
Biological Diversity



WORLD  
RESOURCES  
INSTITUTE



### United Kingdom



### Wales



Llywodraeth Cymru  
Welsh Government



Comisiwn Coedwigaeth Cymru  
Forestry Commission Wales



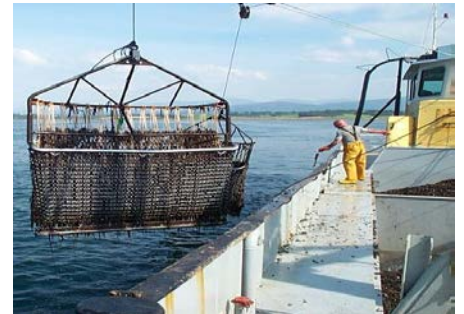
Asiantaeth yr  
Amgylchedd Cymru  
Environment  
Agency Wales



Cyngor Cefn Gwlad Cymru  
Countryside Council for Wales

# Key Findings

- Overall, much of the material reviewed is quite theoretical and often un-tested
- General caution about creating separate approaches – embed the ecosystem approach into current processes
- Overall Acceptance and use of CBD principles in guidance – sometimes simplified.



# Key Findings Cont.....

## Evidence and Resources for Implementation – Assessing Ecosystems; Services; Benefits and Beneficiaries

- Links between Ecosystem functioning and service provision – Science is still lacking in key areas

- Mapping and GIS approaches

- Stakeholder participation

- Valuation/Prioritisation

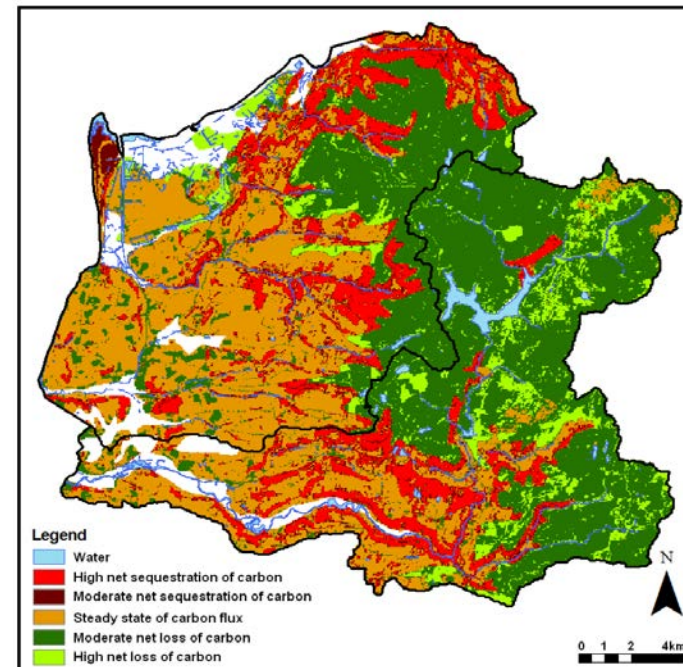
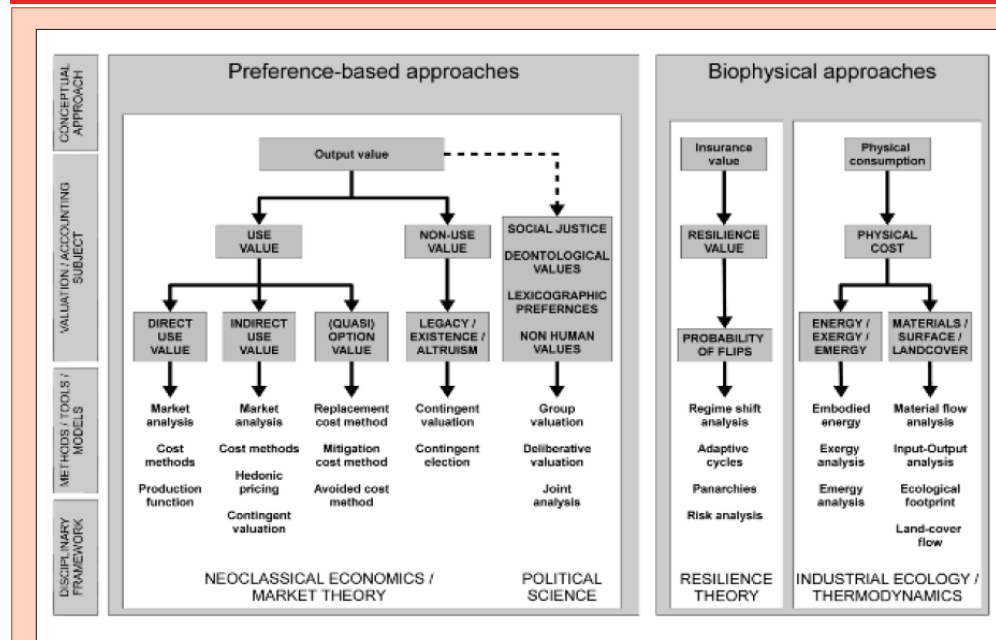


Figure 1: Approaches for the estimation of nature's values



# **Some Key Environmental Management Requirements**

**The Natural Resources Body will be required to move towards a number of different approaches in relation to its regulatory and management role such as :**

- holistic management that reflects the diversity and complexity of the environment and our interdependency with it;**
- identifying the best ways of working with nature to provide environmental, social and economic benefits;**
- developing the habitats we need for the future rather than simply defending those we have now;**
- having a strong spatial or place-based dimension because the best use of land or water will vary hugely from place to place; and**
- partnership approaches that enable wider community**

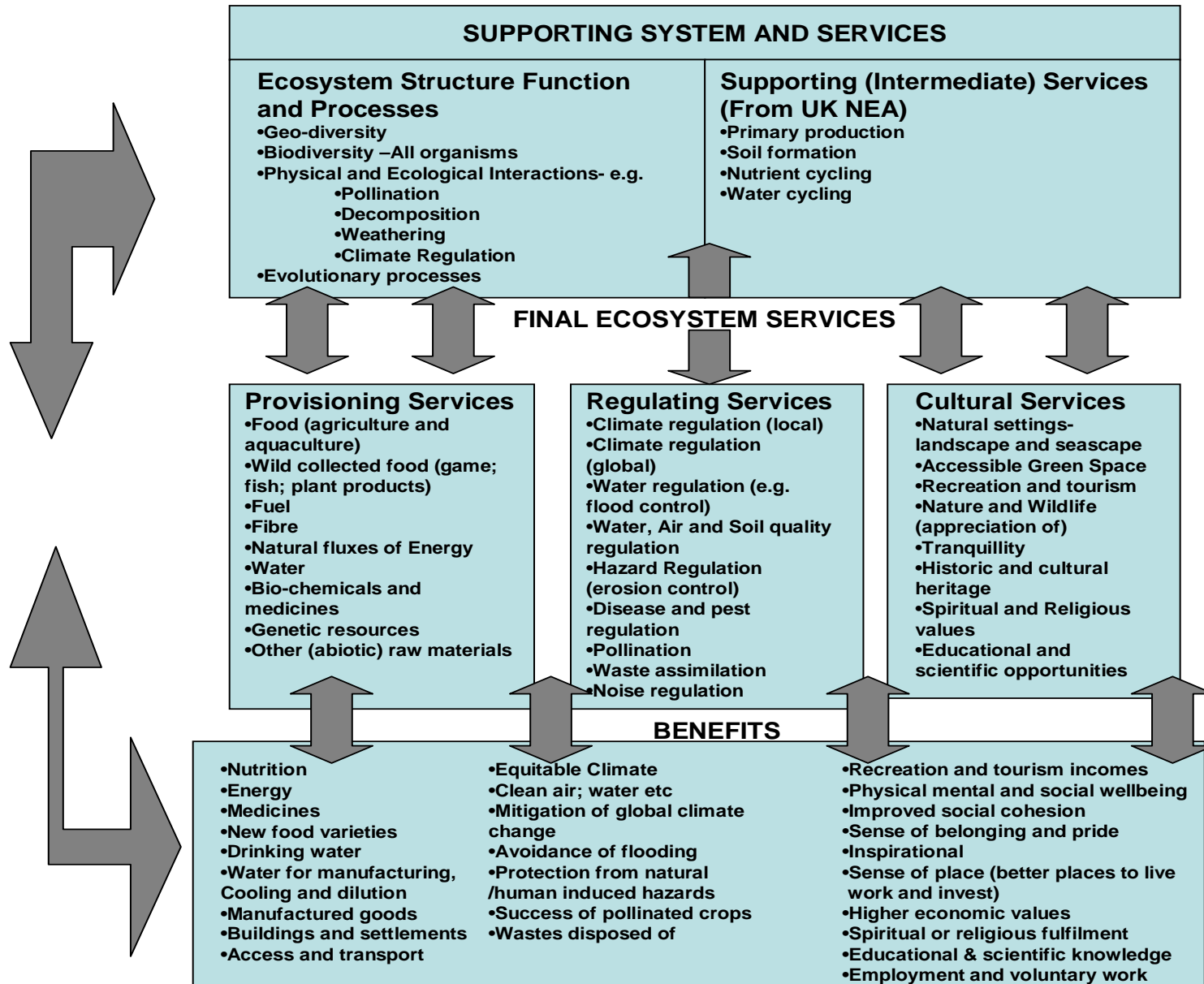
# **A Generic Approach for the Single Body**

- 1. Underpinning Principles –CBD 12 plus some general high level principles or behaviours (more to do on the latter)**

## **COVERING:**

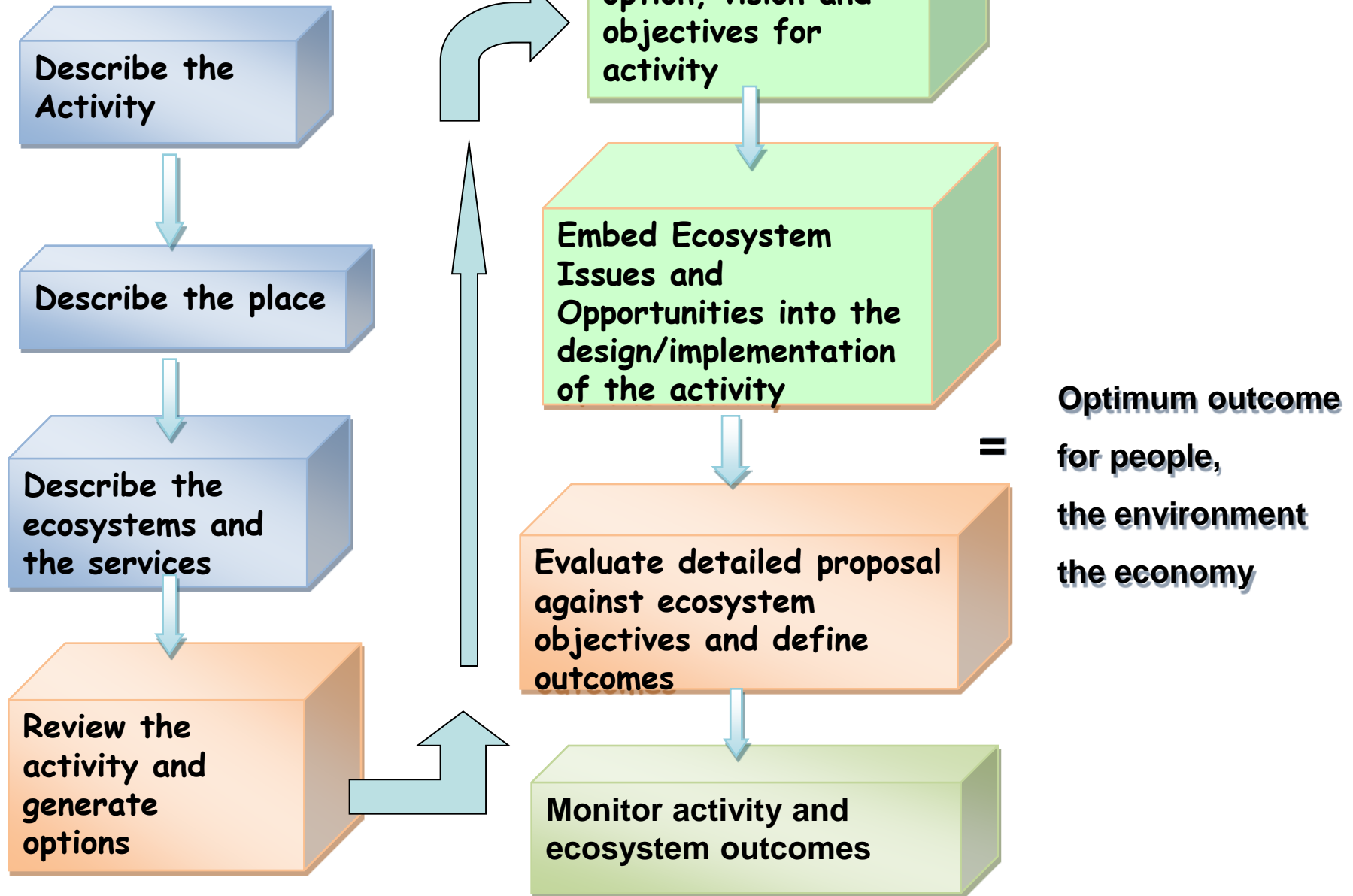
- Societal Choice**
- Localised decisions**
- Adjacent effects**
- Economic drivers**
- Ecosystem Resilience**
- Environmental Limits**
- Spatial and Temporal Scale**
- Long Term Approach**
- Managing Change**
- Biological Diversity**
- Evidence**
- Stakeholder Participation**

## 2. A Consistent Framework of Ecosystem Services





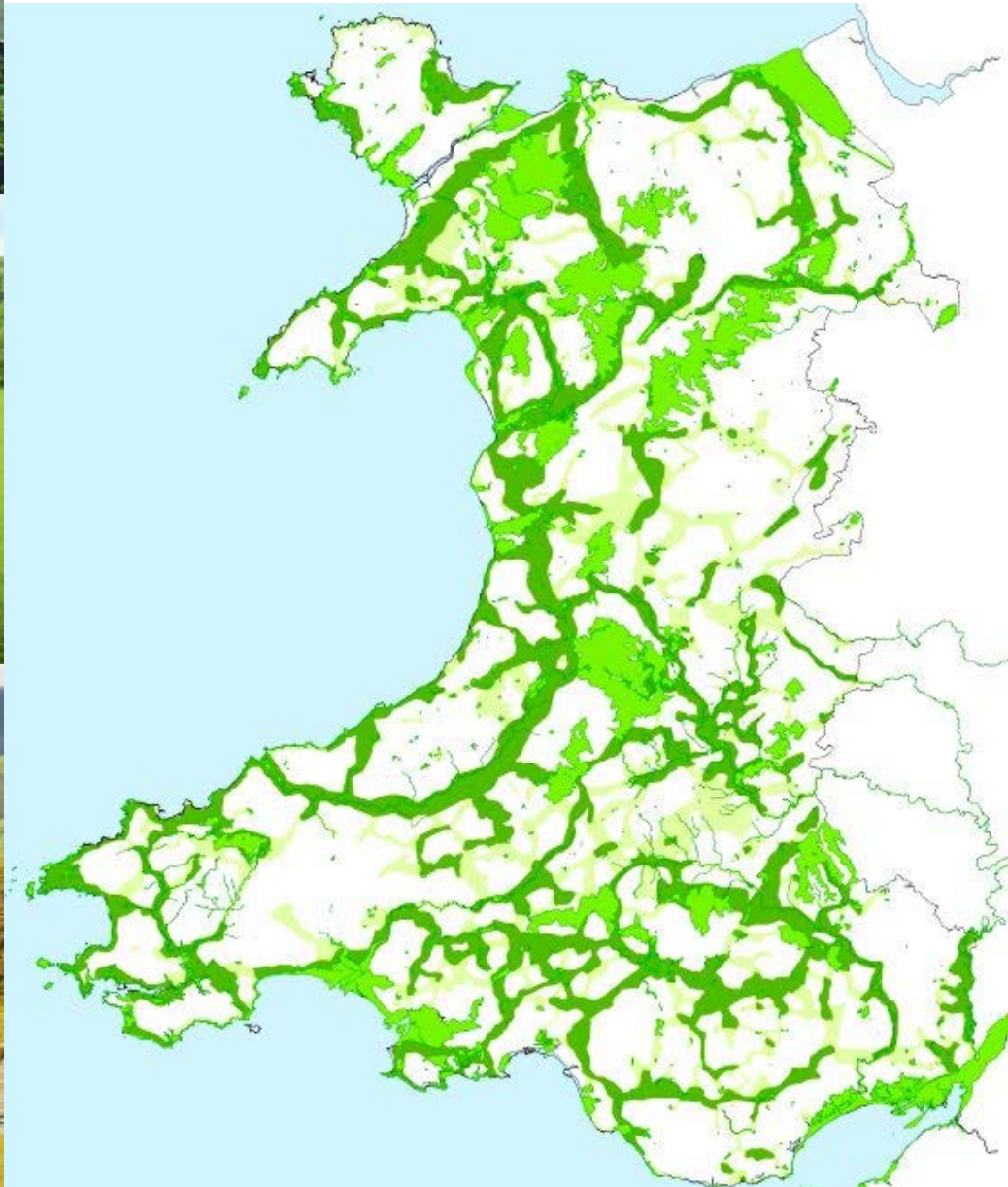
### 3. An Iterative Process (work in progress)



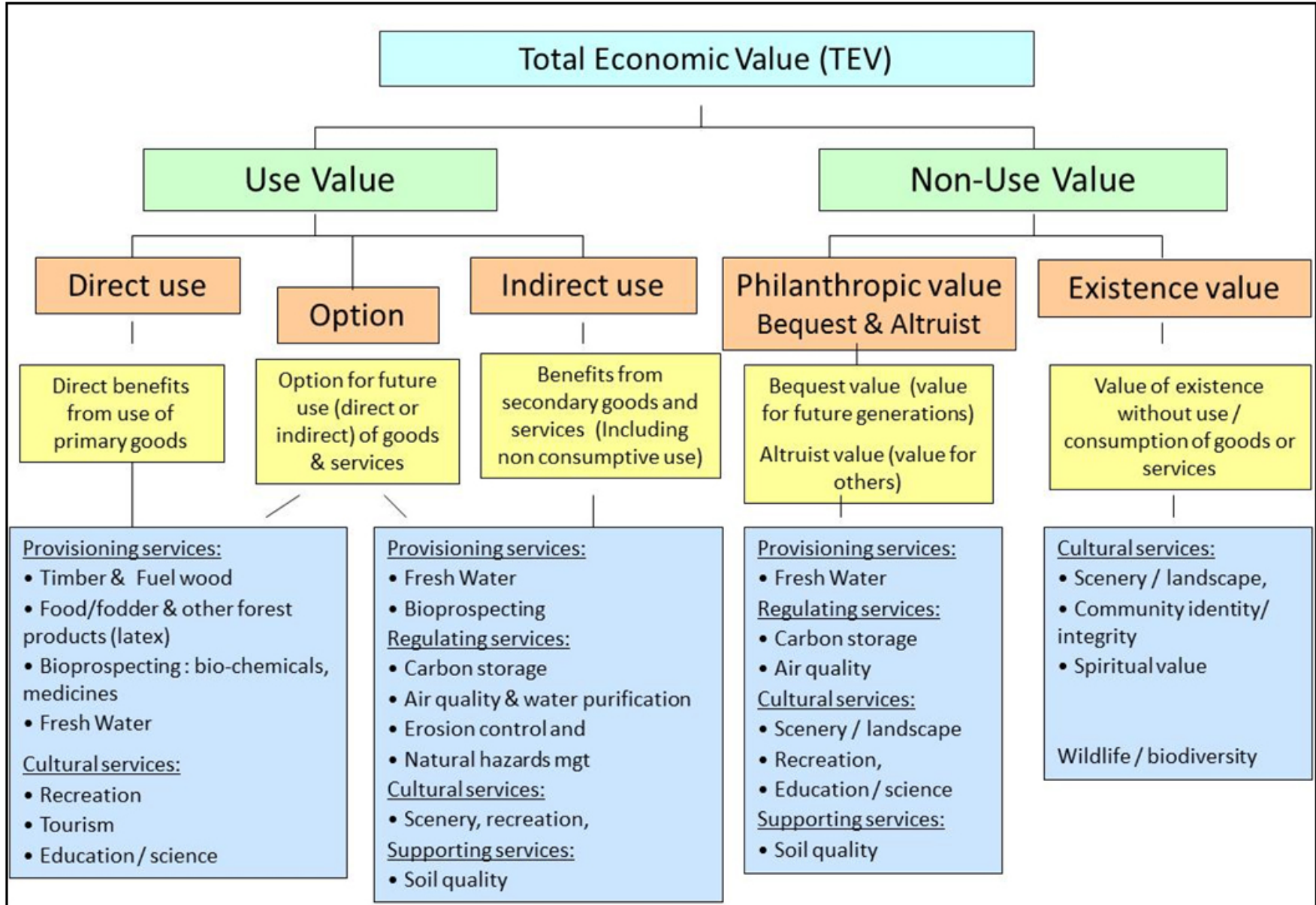
# Ecosystem Data and Tools



# Ecological Resilience



# Valuation or Prioritisation Approaches



# Overall Approach and Summary

## Introduction

- How does it all fit together? -narrative
- Introduction to the Approach- context diagram

## The Ecosystem Approach Generic Framework

- Principles
- Process
- Ecosystem Services
- Data and Tools – Ecosystem specific mapping and evidence and links to specific tools
- Activity specific guidance – to be developed through testing with legacy bodies and discussion with LW teams and WG policy colleagues.
- Forms – to capture experience

## Help and Resources

- Key contacts –team/virtual team + critical friends
- Training
- Glossary
- Useful references and further reading

## Implementation

- Initial testing with the legacy bodies on key work areas
- Embed into the LW virtual teams and day one preparations
- Build the evidence base and learning.

## Background Material Underpinning Our Approach

- Ecosystem Approach Review and NEF material
- Overview and Key Messages